

CASINO DISPLAY MANAGEMENT SYSTEM (CDMS) User Manual.



CTC HOLDINGS

Casino Display Management System (CDMS) User Manual.

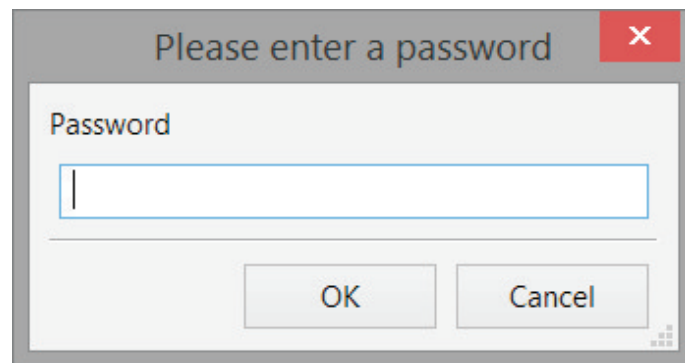
Casino Display Management system (CDMS) is designed for remote operation of American Roulette Display System (ARDS) and Media Display System (MDS).

CDMS can also collect statistical data from ARDS and generate statistics analysis reports.

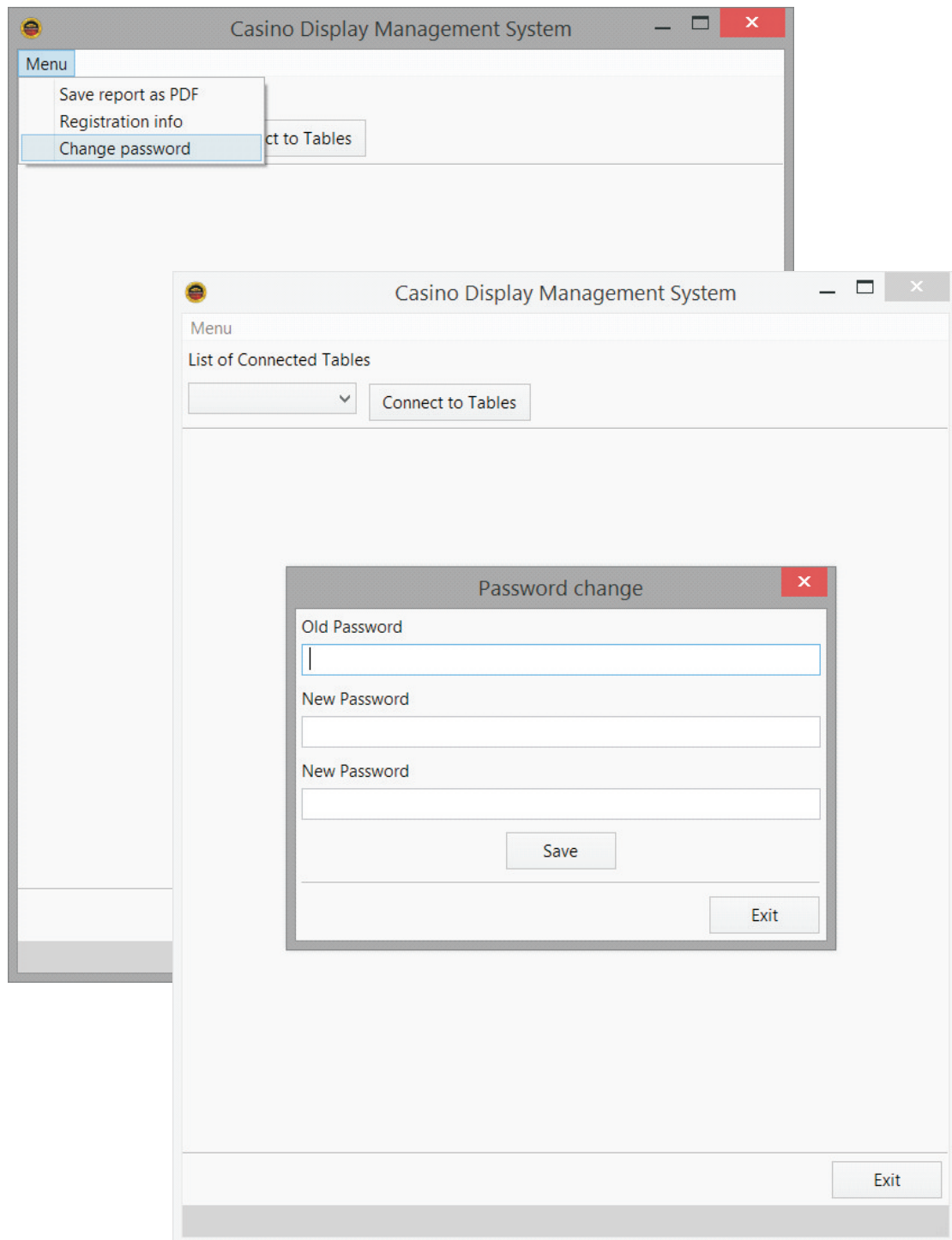
CDMS requires a standard installation procedure and it works on a standard PC with Windows 7, Windows 8 or Windows 8.1.

For remote operation ARDS and/or MDS displays must be integrated into a local network with the server PC on which CDMS is installed.

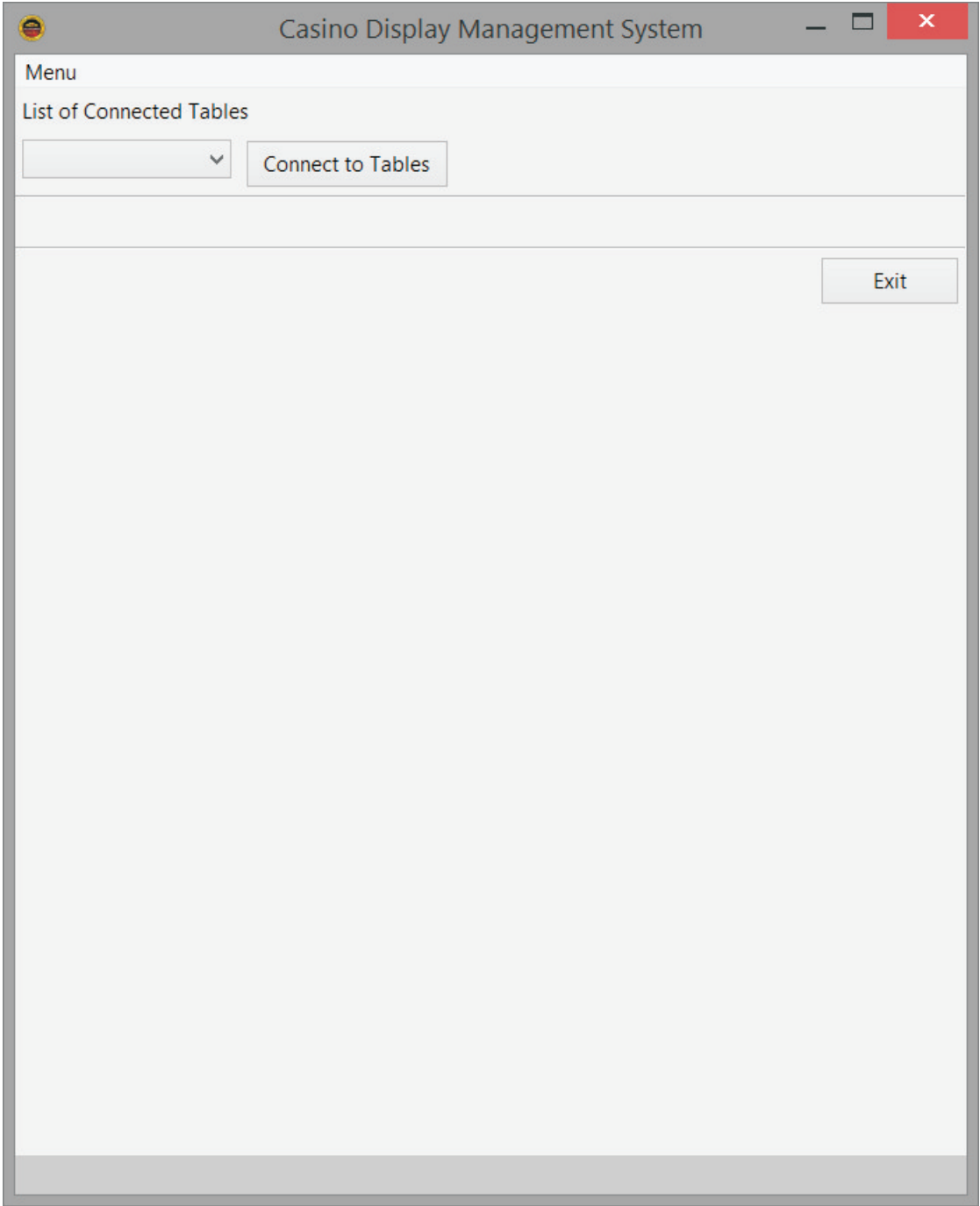
1. When CDMS is launched a password dialogue window will appear on the server PC screen. Default password is the word password.



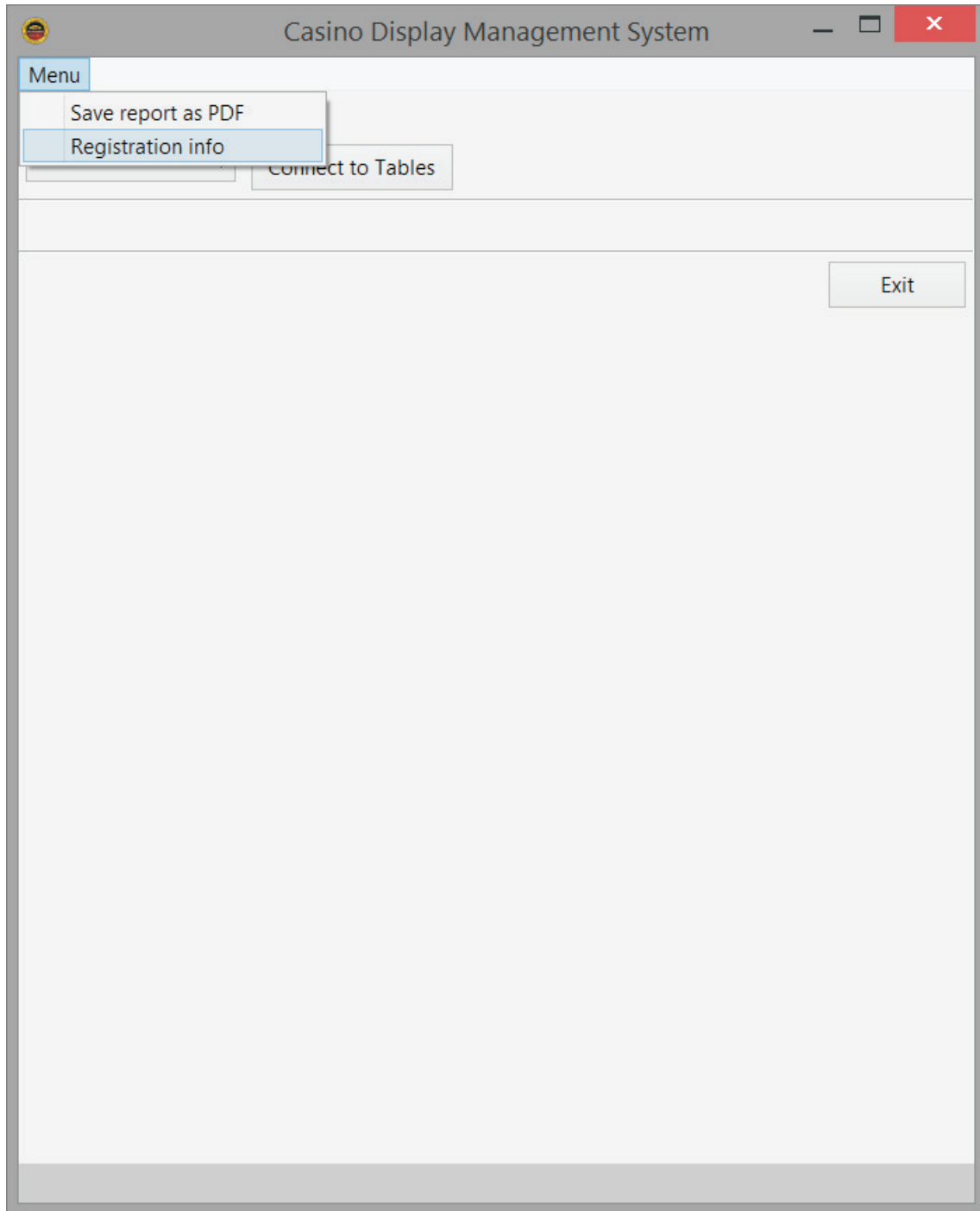
Change password by using the Change Password toolbar of the Menu.



Enter the current password and the following dialogue window will appear on the server PC screen:



2. When using CDMS for the first time click on the Registration Info toolbar of the Menu to fill in all casino details. Casino details will be automatically shown on all statistics reports generated by CDMS.



Fill in the registration form and click Save. All casino details will be saved for future use.

The screenshot shows a software window titled "Casino Display Management System". Inside, there is a "Menu" bar and a section titled "List of Connected Tables" which includes a dropdown menu and a "Connect to Tables" button. A modal dialog box titled "Registration information" is open in the foreground. This dialog contains several text input fields: "Company Name" (filled with "CTC Holding"), "Casino Name" (filled with "Casino 1"), "Casino Address" (filled with "Brivibas iela 45, Riga, Latvia"), "Phone" (filled with "+371 2555 555"), and "Email" (filled with "info@ctc.lv"). At the bottom of the dialog are two buttons: "Save" and "Exit". The main window also has an "Exit" button in its top right corner.

Casino Display Management System

Menu

List of Connected Tables

▼ Connect to Tables

Registration information

Company Name
CTC Holding

Casino Name
Casino 1

Casino Address
Brivibas iela 45, Riga, Latvia

Phone
+371 2555 555

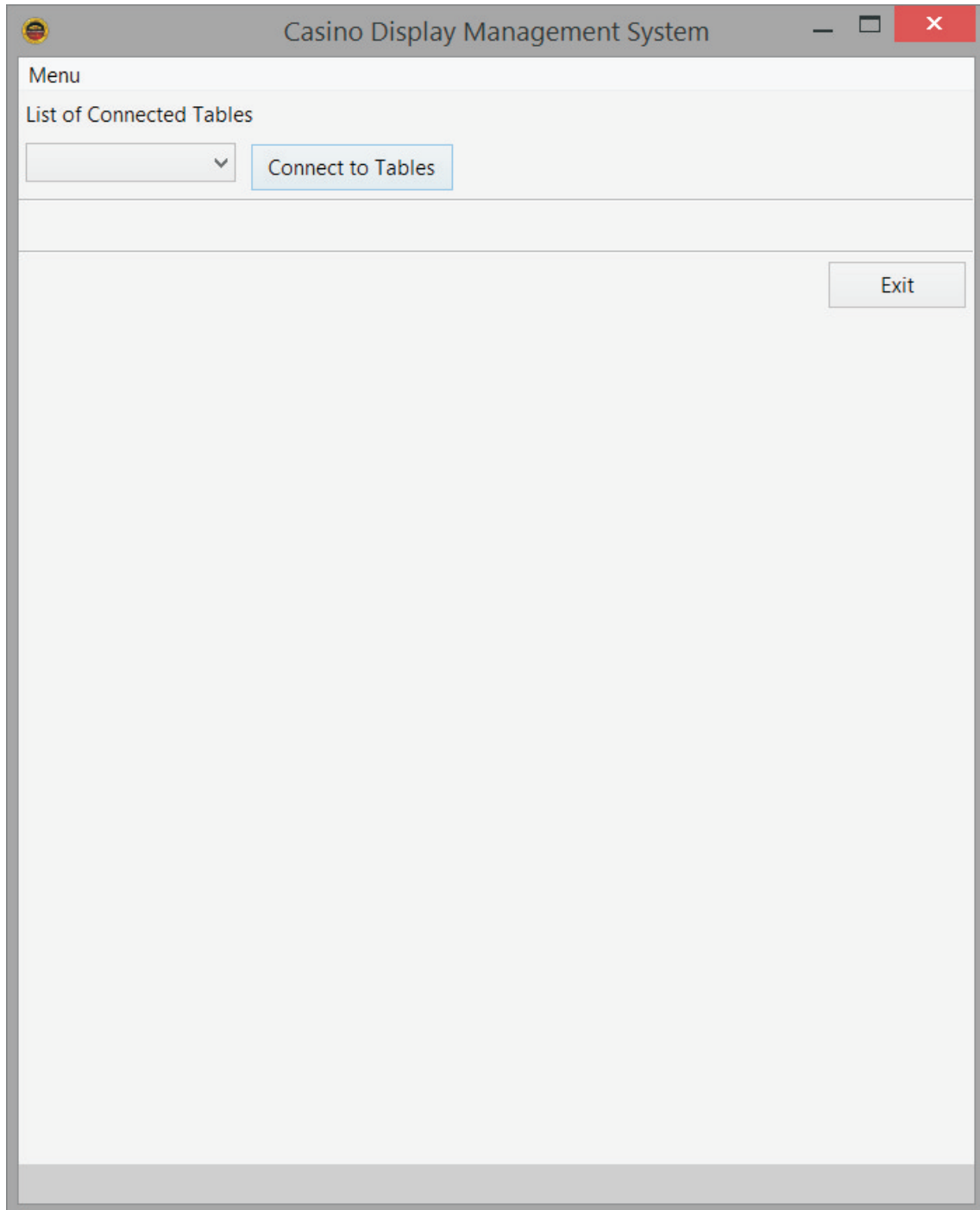
Email
info@ctc.lv

Save

Exit

Exit

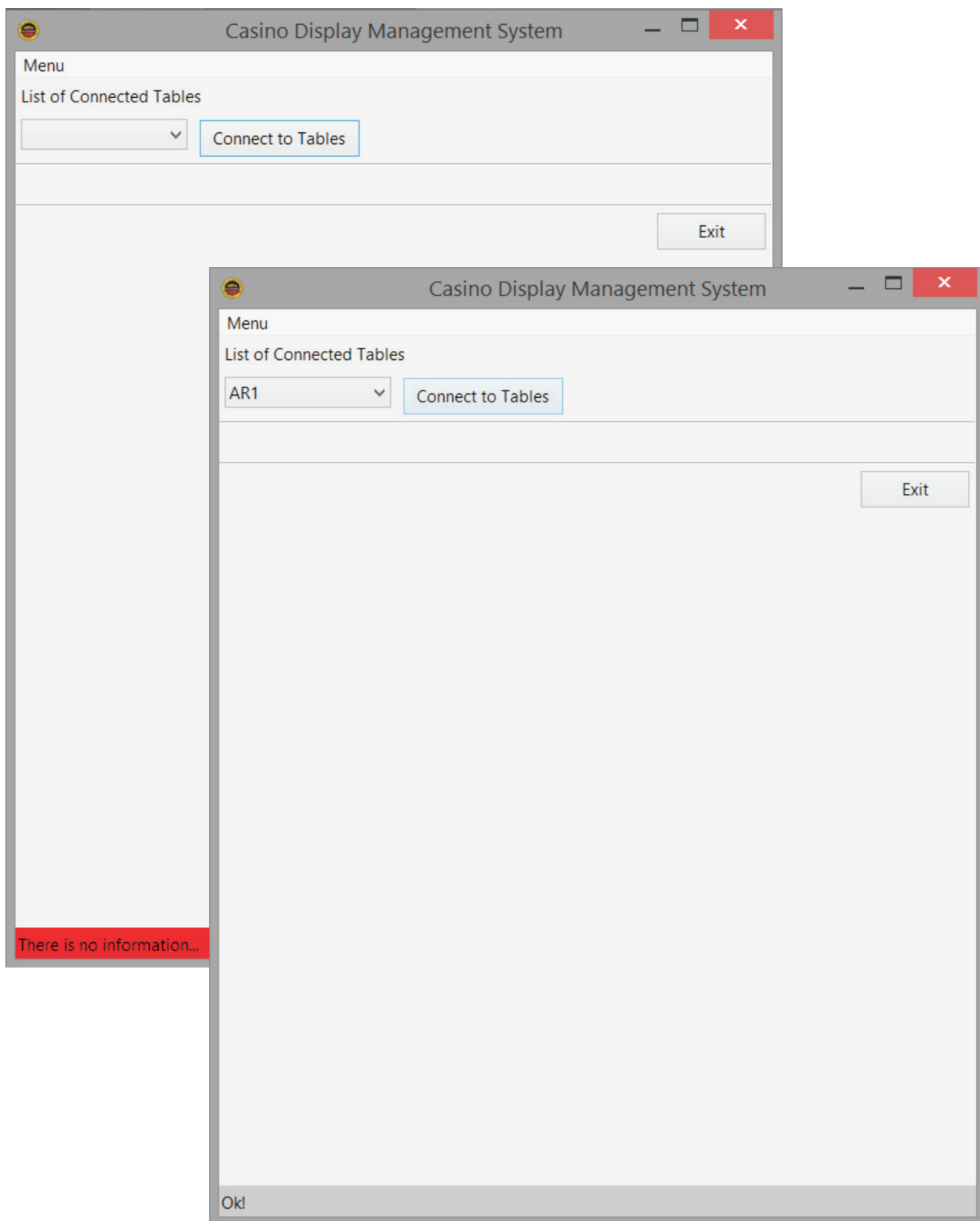
3. Click on Connect to Tables toolbar to identify all ARDS and/or MDS displays connected to the server PC.



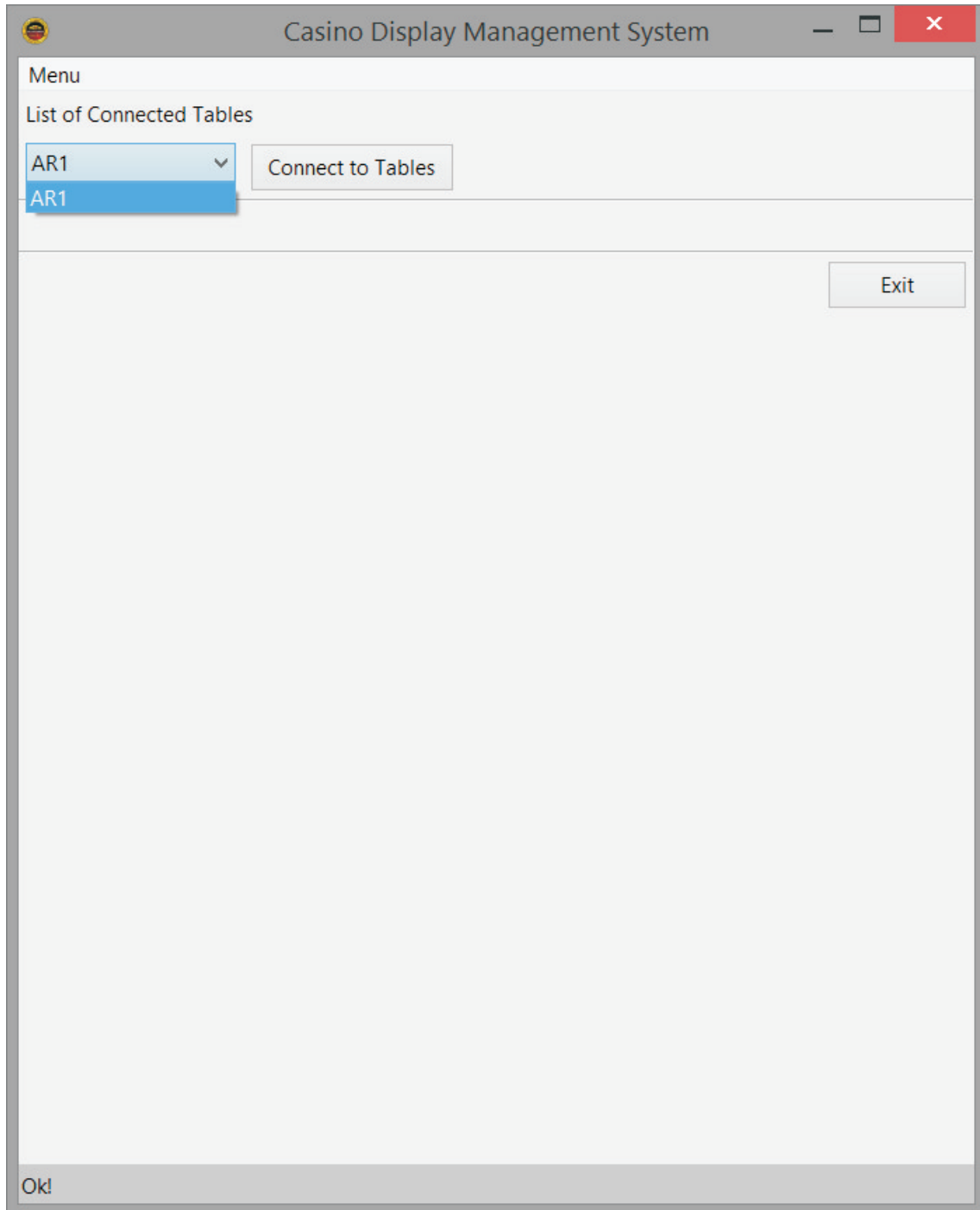
If there are no ARDS and/or MDS displays connected to the server PC a red warning message THERE IS NO INFORMATION will appear at the bottom of the dialogue window.

Check whether ARDS and/or MDS displays are properly connected to the server PC and that they are on.

CDMS must automatically detect all connected ARDS and/or MDS. The message OK will appear at the bottom of the dialogue window and the list of connected devices will appear in the LIST OF CONNECTED TABLES toolbar.



4. Click on the LIST OF CONNECTED TABLES toolbar and choose the device to use.



4.1. If you choose ARDS the following dialogue window will appear on the server PC screen:

Casino Display Management System

Menu

List of Connected Tables

AR1

Connect to Tables

Report type

Data base by dates

03/05/2014

10:21:10

07/07/2015

10:21:10

Generate report

Menu Settings

Exit

CONNECTION OK

There are two types of statistical reports for ARDS.

1) Data base by date and time.

Using date and time filtering it is possible to generate this report containing all win numbers related to the selected period of time.

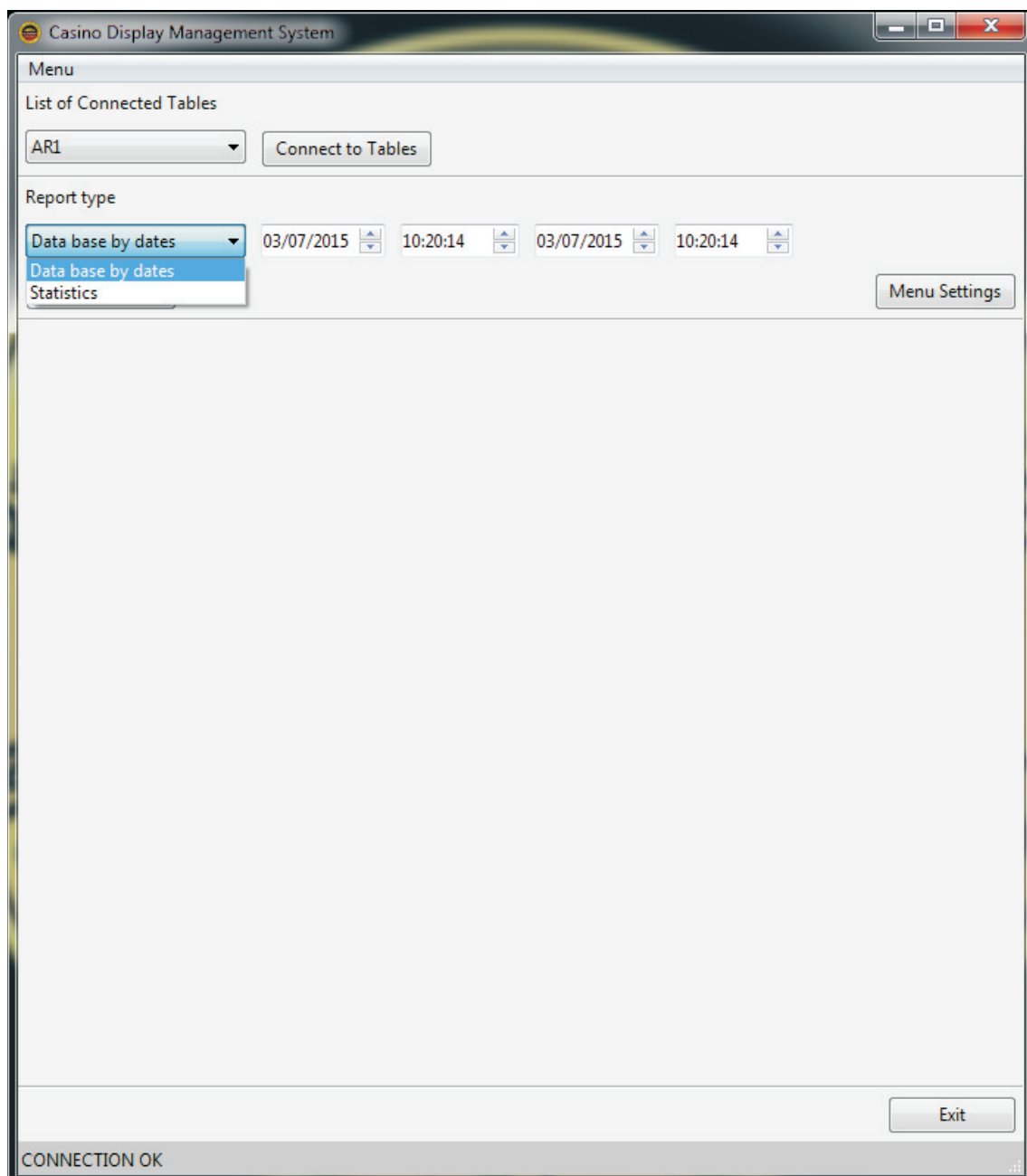
Please note that the data base keeps only the last 20000 win numbers.

2) Wheel analysis statistical report.

This report is based on all win numbers registered in the data base. The report has a form of a table with all registered win numbers and info about each one of them. It helps to assess performance of the roulette wheel using a 10 grade scale. The report contains a graph that visually shows the roulette wheel performance.

Please note that objective assessment of the roulette wheel performance becomes possible only after having 10000 or more win numbers in the data base.

Select the report type in the Report Type toolbar.



Click on the Generate Report toolbar.

The screenshot shows a software window titled "Casino Display Management System". Inside, there is a "Menu" section. Under "List of Connected Tables", there is a dropdown menu showing "AR1" and a "Connect to Tables" button. Below this, the "Report type" section includes a dropdown menu set to "Data base by dates", followed by two pairs of date and time selectors. The first pair shows "03/07/2015" and "10:20:14", and the second pair also shows "03/07/2015" and "10:20:14". There are "Generate report" and "Menu Settings" buttons. A large empty area occupies the center of the window. At the bottom right is an "Exit" button. A status bar at the very bottom displays "CONNECTION OK".

Menu

List of Connected Tables

AR1 Connect to Tables

Report type

Data base by dates 03/07/2015 10:20:14 03/07/2015 10:20:14

Generate report Menu Settings

Exit

CONNECTION OK

This is the dialogue window of the Data base by Date report.

Casino Display Management System

Menu

List of Connected Tables

AR1

Report type

Data base by dates 03/05/2014 10:21:10 07/07/2015 10:21:10

Wheel Analysis Statistical Report (AR1)

Data base by dates

From: 03.05.2014, 10:21:10 To: 07.07.2015, 10:21:10

Total event count: 90
 Automatic input: 39 (0.4333)
 Manual input: 50 (0.5556)
 Deleted event count: 1 (0.0111)

	Date	Time	Winning Num	Input Mode	Table ID
1	12/12/2014	13:01:49	25	Manual	AR12
2	12/12/2014	13:01:51	0	Manual	AR12
3	12/12/2014	13:01:52	6	Manual	AR12
4	12/12/2014	13:01:56	26	Manual	AR12
5	12/12/2014	13:01:58	28	Manual	AR12
6	12/12/2014	13:02:03	0	Manual	AR12
7	12/12/2014	13:02:05	8	Manual	AR12
8	12/12/2014	13:02:07	12	Manual	AR12
9	12/12/2014	13:02:08	15	Manual	AR12
10	12/12/2014	13:02:09	19	Manual	AR12
11	12/12/2014	13:02:11	13	Manual	AR12
12	12/12/2014	13:02:12	17	Manual	AR12
13	12/12/2014	13:02:50	15	Automatic	AR12
14	12/12/2014	13:04:05	0	Automatic	AR12
15	12/12/2014	13:04:13	0	Deleted	AR12
16	12/12/2014	14:25:15	0	Manual	AR1
17	12/12/2014	14:25:16	1	Manual	AR1
18	12/12/2014	14:25:17	2	Manual	AR1

Information is processed!

This is the dialogue window of the Statistics report.

Casino Display Management System

Menu

List of Connected Tables

AR1

Connect to Tables

Report type

Statistics

Generate report

Menu Settings

Wheel Analysis Statistical Report (AR1)

Statistics

From: 12/12/2014, 10:21:10 To: 03/07/2015, 10:21:10

Total event count: 89

Automatic input: 39 (0.4333)

Manual input: 50 (0.5556)

Deleted event count: 1 (0.0111)

Wheel performance grade (1 to 10): 5

Important notice: Objective statistical analysis starts from 10000 events

From To Winning Num Win number Statistics

1 2 3 4 5 6 7 8 9 10 11 12 13 14 15 16 17

Casino Display Management System

Menu

Manual input: 50 (0.5556)

Deleted event count: 1 (0.0111)

Important notice: Objective statistical analysis starts from 10000 events

From To Winning Num Win number Statistics

1 2 3 4 5 6 7 8 9 10 11 12 13 14 15 16 17 18

Exit

Information is processed!

Both reports can be saved as PDF files. The reports are saved in the Reports folder. The Reports folder is located in the same directory with exe. file of CDMS.

To save the report select in the Menu Save report as PDF toolbar.

Menu

- Save report as PDF
- Registration info
- Change password

Report type: **Statistics**

Generate report **Menu Settings**

Wheel Analysis Statistical Report (AR1)

Statistics

From 11/12/2014 To 16/12/2014

Total event count: 65
Manual input: 65 (0.9286)
Deleted event count: 5 (0.0714)

Important notice:
Objective statistical analysis start from 10000 events

Quality (1 to 10): **5**

	From	To	Winning N	Win numb	Statistics
1	11/12/2014	16/12/2014	0	2	0.0308
2	11/12/2014	16/12/2014	1	2	0.0308
3	11/12/2014	16/12/2014	2	3	0.0462
4	11/12/2014	16/12/2014	3	3	0.0462
5	11/12/2014	16/12/2014	4	3	0.0462
6	11/12/2014	16/12/2014	5	2	0.0308
7	11/12/2014	16/12/2014	6	4	0.0615
8	11/12/2014	16/12/2014	7	2	0.0308
9	11/12/2014	16/12/2014	8	2	0.0308
10	11/12/2014	16/12/2014	9	3	0.0462
11	11/12/2014	11/12/2014	10	1	0.0154
12	11/12/2014	11/12/2014	11	1	0.0154
13	11/12/2014	16/12/2014	12	3	0.0462
14	11/12/2014	11/12/2014	13	1	0.0154

To change the settings of ARDS click on the Menu Settings toolbar.

Casino Display Management System

Menu

List of Connected Tables

AR1

Connect to Tables

Report type

Statistics

Generate report

Menu Settings

Wheel Analysis Statistical Report (AR1)

Statistics

From 11/12/2014 To 16/12/2014

Total event count: 65
Manual input: 65 (0.9286)
Deleted event count: 5 (0.0714)

Important notice:
Objective statistical analysis start from 10000 events

Quality (1 to 10): 5

	From	To	Winning N	Win numb	Statistics
1	11/12/2014	16/12/2014	0	2	0.0308
2	11/12/2014	16/12/2014	1	2	0.0308
3	11/12/2014	16/12/2014	2	3	0.0462
4	11/12/2014	16/12/2014	3	3	0.0462
5	11/12/2014	16/12/2014	4	3	0.0462
6	11/12/2014	16/12/2014	5	2	0.0308
7	11/12/2014	16/12/2014	6	4	0.0615
8	11/12/2014	16/12/2014	7	2	0.0308
9	11/12/2014	16/12/2014	8	2	0.0308
10	11/12/2014	16/12/2014	9	3	0.0462
11	11/12/2014	11/12/2014	10	1	0.0154
12	11/12/2014	11/12/2014	11	1	0.0154
13	11/12/2014	16/12/2014	12	3	0.0462
14	11/12/2014	11/12/2014	13	1	0.0154

Information is processed!

This is the dialogue window of ARDS settings.

Casino Display Management System


Menu

List of Connected Tables

AR1

Report type

Statistics



MIN BET: 1€
MAX BET: 25€

TABLE: AR1

4

19 4 21

6 2


HOT NUMBERS

COOL NUMBERS

3 5 18 7 3

15 33 31

21 6



Min Bet

1

Max Bet

25

Currency Id

EUR

Table ID

AR1

Single/Double Zero

1

COM port

4

Statistic timeout

300

Input Mode

CAMERA

Media window time out

10

Work Mode

Information is processed!

Casino Display Management System

Menu

MIN BET: 1€

MAX BET: 25€

TABLE:
AR1

4

6

2

3

5

18

7

3

15

33

31

6

0

36

29

HOT NUMBERS

COOL NUMBERS

CTC HOLDINGS®
WWW.CTC.LV

Min Bet

Max Bet

Currency Id

EUR
▼

Table ID

Single/Double Zero

COM port

Statistic timeout

Input Mode

CAMERA
▼

Media window time out

Work Mode

FULL
▼

Media window mode

SLIDE_SHOW
▼

Information is processed!

It is possible to change all ARDS settings remotely except the setting of the roulette wheel type (single or double zero).

The type of the roulette wheel can be changed only by using the key pad of the particular ARDS. This is done on purpose, because change of the type of the roulette wheel deletes all win numbers from the data base.

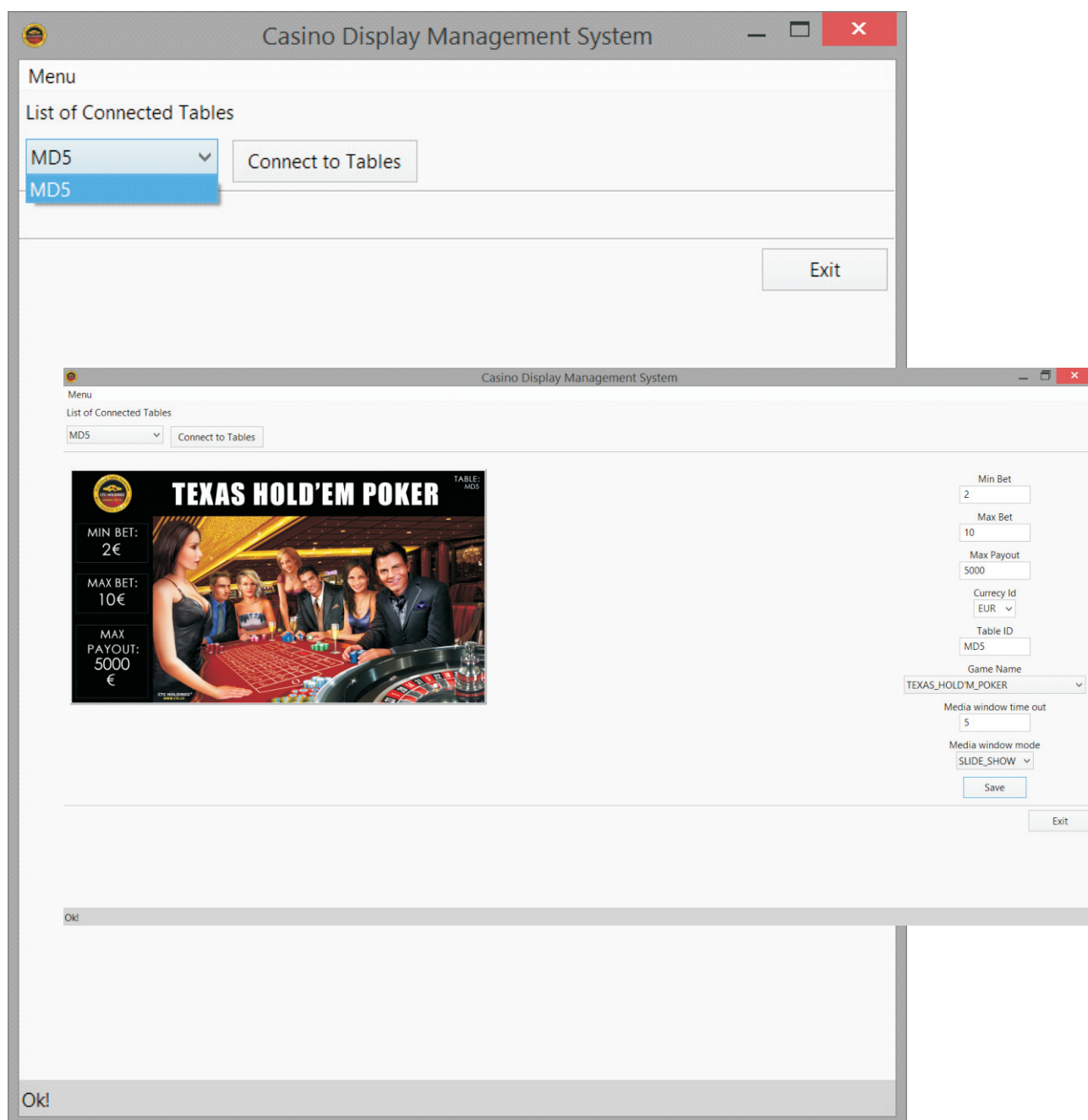
It is possible to make changes in the fields of Min Bet, Max Bet, Table Id, COM port, Statistic timeout, Media window time out by using the key board of the server PC.

For the fields of Input Mode, Work Mode, Media window mode use the list of options. Scroll the lists by pressing Enter until you select the correct setting.

In the Currency field it is possible to choose the relevant currency from the list. If the currency is not on the list it is possible to enter the currency name by using the key board of the server PC.

To save changes please press Save.

4.2. If you choose MDS the following dialogue window will appear on the server PC screen:



It is possible to change all MDS settings remotely.

It is possible to make changes in the fields of Min Bet, Max Bet, Maximum Payout, Table Id, Media window time out by using the key board of the server PC.

For the fields of Game name and Media window mode use the list of options. Scroll the lists by pressing Enter until you select the correct setting.

In the Currency field it is possible to choose the relevant currency from the list. If the currency is not on the list it is possible to enter the currency name by using the key board of the server PC.

To save changes please press Save.

Please note that if the ID numbers of ARDS or MDS are changed it is necessary to scan the local network by pressing Connect to Tables toolbar to identify ARDS and MDS with the new ID numbers.

To exit from CDMS press the Exit toolbar.



For technical or commercial issues please contact

CTC HOLDINGS

1 Starta str., LV-1026, Riga, Latvia

Tel: +371 67 379303

Fax: +371 67 378 466

E-mail: info@ctc.lv